

SHIELDED DRY BATH

LOW & MEDIUM ENERGY



ASSOCIATED PRODUCTS

- Medi handling tongs
- Positong tongs



Download the product data sheet at lemerpax.com



CHARACTERISTICS

General Shielded heating dry bath

External dimensions: L 200 x D 234 x H 96 mm

Temperature range: 5 to 150°C max.

Heating system time: 1 hour in stabilisation

Temperature display resolution: 0.1 °C

Power: 200 W

Standard electrical specifications: 230 V, 50-60 Hz (also available in 115 V - Ref. 00043732)

Weight: 6,12 kg

Rack block

Total dimensions: L 95 x D 75 x H 49 mm

Number of slots: 6

Radiation protection: 5 mm of lead

Auxiliary equipment provided

Thermometer: With stainless steel probe Measures up to 150°C Battery operated

Extraction handle: Stainless steel, for removing the lead vial rack block after heating

Package

Package dimensions: L 330 x D 280 x H 170 mm

Package weight: Contact us

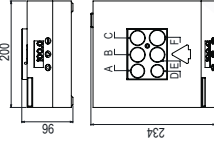
Ref.: 00014837 (230 V) / 00043732 (115 V)

The shielded dry water bath is used during the heating stages of certain radiolabelling operations or reconstitution of cold kits with radioisotopes such as ^{99m}Tc. It can be installed on a benchtop, behind a screen, with its 5 mm lead shield, or integrated into the Easypharma Compact® and 4R Low and Medium Energy hot cells or into the PSMEB. This high-precision digital dry-block heater is microprocessor controlled with a setting resolution of one tenth of a degree.



The set temperature, which can range from 5 to 150°C, is automatically stored in the memory if the appliance is switched off or in the event of a power failure. The bath also features an independent built-in digital timer with an audible alert when the time is up without interrupting the heating. The dry water bath is available in two versions for 230 V and 115 V power supplies to meet the electrical requirements of all countries. It is supplied with a thermometer 1, fitted with a stainless steel probe 2, for improved accuracy and to ensure the actual temperature inside the vial rack 3. This shielded rack is made of 5 mm lead coated with Teflon (PTFE) and features 6 slots with different diameters, which can be modified on request, to adapt to several vial models and sizes. A stainless steel handle is also provided to remove the rack after the heating time and prevent burns. A heating/cooling unit reference with Peltier design and high energy efficiency allowing to cool or heat the preparations from -10 to 100°C is also available (contact us for more information).

EFFECTIVE DIMENSIONS (mm)



Indices	Diameter (mm)	Depth (mm)
A	24.5	30
B	26.5	40
C	26.5	42
D	22.5	40
E	26.5	37
F	28.5	47

SHIELDED STIRRER

LOW & MEDIUM ENERGY



Download the product data sheet at lemerpax.com



CHARACTERISTICS

General

External dimensions: L 137 x D 172 x H 145 mm

Vial wedge dimensions: Ø 31 x H 39 mm / Ø 26 x H 39 mm

Weight: 4,8 kg

Radiation protection: 6 mm of lead

Power supplies and speeds of rotation: 230 V / 50Hz 100 to 2,500 rpm 230 V / 60Hz 100 to 3,200 rpm

Movement: Circular vibration

Speed controller button: Scale with reference points

Operating modes: Continuous or automatic with slide switch

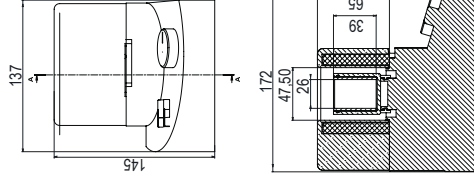
Package

Package dimensions: L 220 x D 200 x H 150 mm

Package weight: 8 kg

Ref.: 00035007

EFFECTIVE DIMENSIONS (mm)



The shielded stirrer is an essential accessory for certain kit reconstitutions requiring stirring time when radiolabelling with ^{99m}Tc for example. It fits perfectly into Easypharma Compact® and 4R Low and Medium Energy hot cells while providing additional radiation protection with its 6 mm lead shield around the vial 1.



Two models of vial bottle adapters (26 and 31 mm diameter) are supplied with the product to fit several types of bottles of various capacities.

With a vortex type circular vibration movement, controlled by a speed control knob 2, the speed can be varied over a very wide range from 100 to 2,500 revolutions per minute with a 230V power supply. It is very simple to use, and ready to use after simply pressing the power button 3. To assist the user, a scale with reference points 4 is provided to select the recommended rotation setpoint. With the side switch 5, the user can

change the operating mode at any time from "Continuous" to "Automatic" where the stirring stops as soon as the vial is removed from the system for enhanced safety.